

Solution Guide for filter registration problem on Windows XP SP2 and 64 Bit Processors

There is a problem when registering MontiVision filters which use the Intel Open Computer Vision Library (<http://www.intel.com/research/mrl/research/opencv/>) runtime files (cv096.dll and cxcore096.dll) on Windows XP Service Pack 2 when running on a 64 bit processor like the AMD 64.

The problem is that the Microsoft “Data Execution Protection” – which is active on new processors only – prevents RegSvr32.exe to load the OpenCV DLLs as those violate the Microsoft data execution rule.

This issue does not appear when installing the filters using a regular installer like Microsoft Windows Installer, but it does when registering filters ‘manuall’ using the Microsoft Registry Server (RegSvr32.exe).

Some background on the issue:

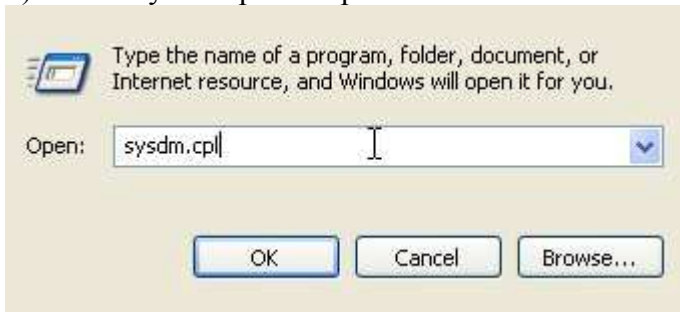
www.eggheadcafe.com/ng/microsoft.public.win32.programmer.tools/post21051614.asp
support.microsoft.com/default.aspx?scid=kb;en-us;875351

The following steps have to be done to work around the problem until the OpenCV team adapted their libraries:

1) Choose “Start Menu \ Run...”



2) Insert “sysdm.cpl” and push “OK”



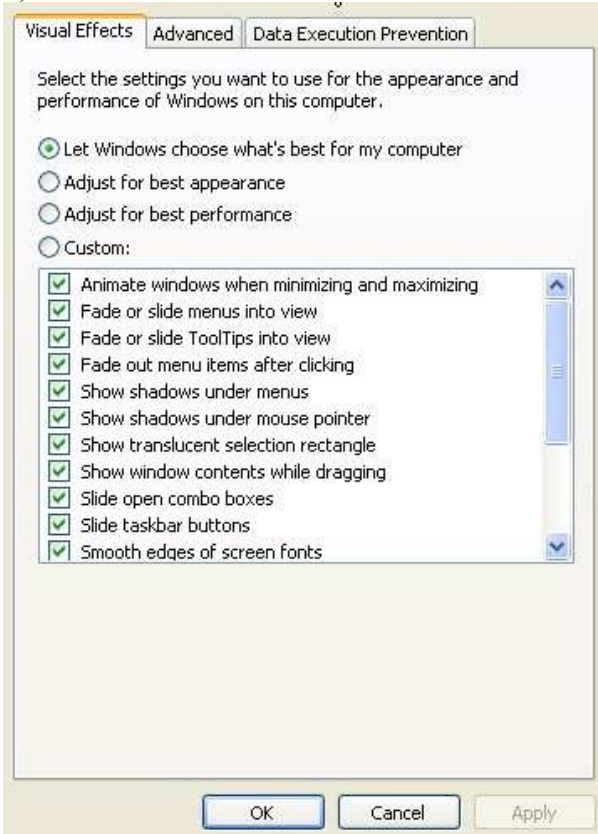
3) Choose tab “Advanced”



4) Push “Settings” button



5) Choose “Data Execution Protection” tab



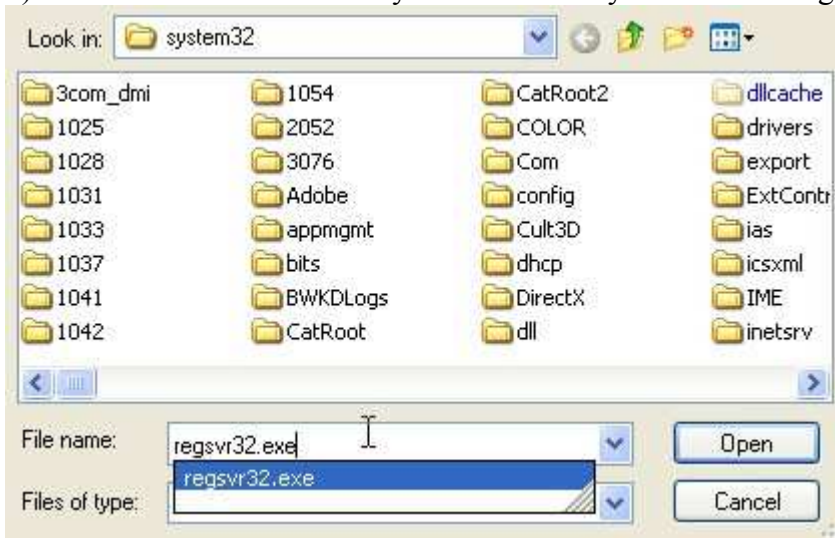
6) Change mode to “Turn on DEP for all programs and services except those I select:”



7) Push the “Add...” button



8) Browse to the Windows \ System32 directory and choose RegSvr32.exe



9) Confirm this step by pushing “OK”



10) Leave the dialog by pushing “OK”

